

User Manual

# OnViewcloud User Manual

OnViewcloud.net

## Contents

OnViewcloud intro:.....	2
DVR Settings:.....	2
OnViewcloud Settings:.....	3
<b>1) Register.....</b>	<b>3</b>
User Registration:.....	3
<i>Recovering forgotten passwords:</i> .....	4
Single User and Senior User .....	4
<b>2) Device Remote Viewing.....</b>	<b>5</b>
<b>3) Device Management.....</b>	<b>6</b>
<b>Group</b> .....	6
Add group.....	6
Modify group .....	6
Delete son group.....	6
<b>Devices</b> .....	6
Add Device.....	6
Delete Device .....	6
<b>4) Modification.....</b>	<b>7</b>
<b>5) User Management.....</b>	<b>7</b>
<b>Role</b> .....	7
Add.....	7
Modify .....	8
Delete .....	8
<b>6) User .....</b>	<b>8</b>
Add.....	8
Delete.....	9
<b>7) Journal Search.....</b>	<b>9</b>
<b>8) Personal Information.....</b>	<b>9</b>
<b>9) Modify Password .....</b>	<b>10</b>
<b>10) System Help.....</b>	<b>10</b>
<b>11) Log out of the system.....</b>	<b>10</b>

**OnViewcloud** intro:

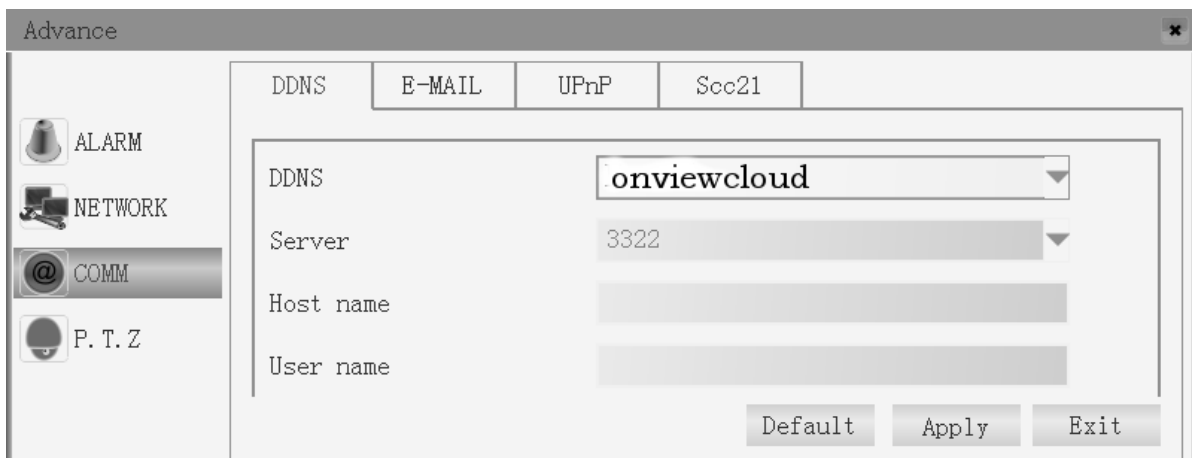
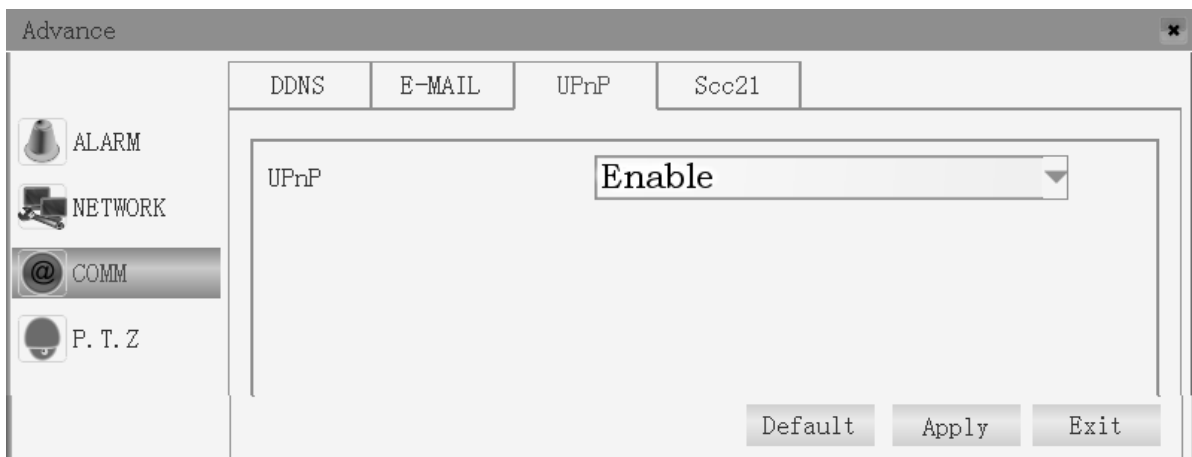
OnViewcloud is an intelligent monitoring and management system that can be used for monitoring and managing your various devices and remote images; it works as a server and solves problems like: complicated network settings, and free domain instability

Two parts are introduced here: **DVR Settings** and **onviewcloud.net Settings**.

**DVR Settings:**

Turn on the DVR. Log in to the main menu and go to Advance-> Network .

- 1) Set the DVR IP according to your local IP.
- 2) Turn on UPnP on both the DVR and the router. (see image below)
- 3) Enable **onviewcloud** in the DDNS submenu on the DVR. (see image below)



## OnViewcloud Settings:

### 1) Register

Open your web browser. Input [www.onviewcloud.net](http://www.onviewcloud.net) to enter the login window displayed below:

### User Registration:

Please register before attempting to log in for the first time. Follow the proceeding instructions carefully.

User	Create a user name. You can use an email account if you want.
Password	Choose a password. This will be your log-in password for this account.
Confirm Password	Retype your password to confirm its accuracy.
Name	Choose a descriptive name to call your account. Any name you want. Example: In-N-Out Restaurant DVR.
Telephone	Not necessary, but optional.
Email	<b>Important:</b> use a valid email address.*
MSN	Not necessary. Leave blank.

\*Note: Please enter a valid email address; this is the ONLY WAY to recover lost passwords.

**Recovering forgotten passwords:**

If you forget your password, please click “forgot password” and enter your user name, then a link will be sent to your email address on-file. Check your email and click the link. Change your password when prompted.



Forgot password don't worry!

Please input the correct user name, we'll tell you the email address password!

Please enter your user name

Finish

**Single User and Senior User**

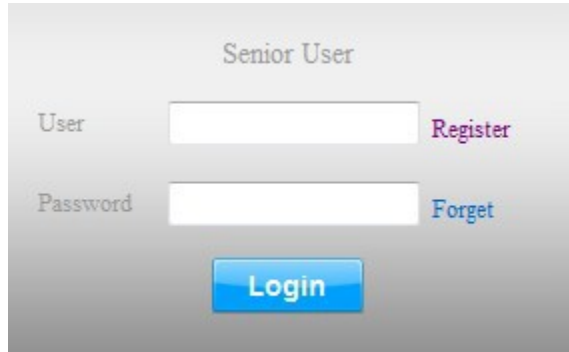
*Single User log-in:*

- Supports one DVR serial number log-in
- Input DVR serial number and DVR password (the password used to log into your DVR at the main menu)

o

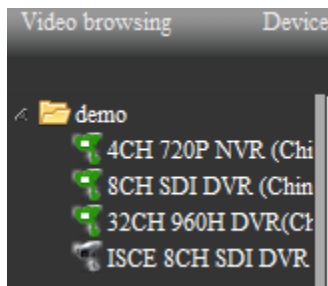
**Senior User log-in:**

- Supports multiple devices and users
- Input the user name and password of your onviewcloud.net account to log in



**2) Device Remote Viewing**

Here you can find Group and Device, which are all added in Device Management. Right-click the device icon and select Browsing by UPNP, or Browsing by P2P.



Green Icon: device is on-line.  
 Grey Icon: device is off-line

### 3) Device Management

#### Group

##### Add group

To add son group, select father group, input the son group name and save.

##### Modify group

You can edit any son group except the center father group. You can change the group which the son group belongs to and revise the name of the son group

##### Delete son group

You can delete any son group except the center father group which cannot be deleted. If the group deleted has son groups, the son groups will be deleted also.

#### Devices

##### Add Device

- Select the group the device will belong to.
- Give the device a name (any name you want). Example: Warehouse DVR.
- Input the serial number and user name and password of the DVR.
- Save the changes.

Fields marked with an \* are required, not optional.

##### Delete Device

Multiple devices can be deleted at once by marking the check box beside the device names and clicking Delete.

+ Add - Delete		Serial number	Device name	Device user	LAN	WAN	Web port	Media port
<input type="checkbox"/>	Operate	NF4017CA0018F5117418	4CH 720P NVR (China)	admin	192.168.1.249	119.122.12.131	85	9000
<input type="checkbox"/>	Edit Delete	D78029SA0018F511E00C	8CH SDI DVR (China)	admin	192.168.1.202	119.122.12.131	81	9001
<input type="checkbox"/>	Edit Delete	D72388SA0018F51121DA	32CH 960H DVR(China)	admin	192.168.1.250	119.122.12.131	86	9006
<input type="checkbox"/>	Edit Delete	D78029S10018F51153E2	ISCE 8CH SDI DVR	admin				

Single devices can be deleted by selecting the single device and clicking *Delete*.

+ Add - Delete							
Operate	Serial number	Device name	Device user	LAN	WAN	Web port	Media port
<input type="checkbox"/> <a href="#">Edit</a> <a href="#">Delete</a>	NF4017CA0018F5117418	4CH 720P NVR (China)	admin	192.168.1.249	119.122.12.131	85	9000
<input type="checkbox"/> <a href="#">Edit</a> <a href="#">Delete</a>	D78029SA0018F511E00C	8CH SDI DVR (China)	admin	192.168.1.202	119.122.12.131	81	9001
<input type="checkbox"/> <a href="#">Edit</a> <a href="#">Delete</a>	D72388SA0018F51121DA	32CH 960H DVR(China)	admin	192.168.1.250	119.122.12.131	86	9006
<input type="checkbox"/> <a href="#">Edit</a> <a href="#">Delete</a>	D78029S10018F51153E2	ISCE 8CH SDI DVR	admin				

#### 4) Modification

Click *Edit* to modify a DVR's settings

+ Add - Delete							
Operate	Serial number	Device name	Device user	LAN	WAN	Web port	Media port
<input type="checkbox"/> <a href="#">Edit</a> <a href="#">Delete</a>	NF4017CA0018F5117418	4CH 720P NVR (China)	admin	192.168.1.249	119.122.12.131	85	9000
<input type="checkbox"/> <a href="#">Edit</a> <a href="#">Delete</a>	D78029SA0018F511E00C	8CH SDI DVR (China)	admin	192.168.1.202	119.122.12.131	81	9001
<input type="checkbox"/> <a href="#">Edit</a> <a href="#">Delete</a>	D72388SA0018F51121DA	32CH 960H DVR(China)	admin	192.168.1.250	119.122.12.131	86	9006
<input type="checkbox"/> <a href="#">Edit</a> <a href="#">Delete</a>	D78029S10018F51153E2	ISCE 8CH SDI DVR	admin				

Group:

Device name:

Serial number:

Device user:

Device password:

#### 5) User Management

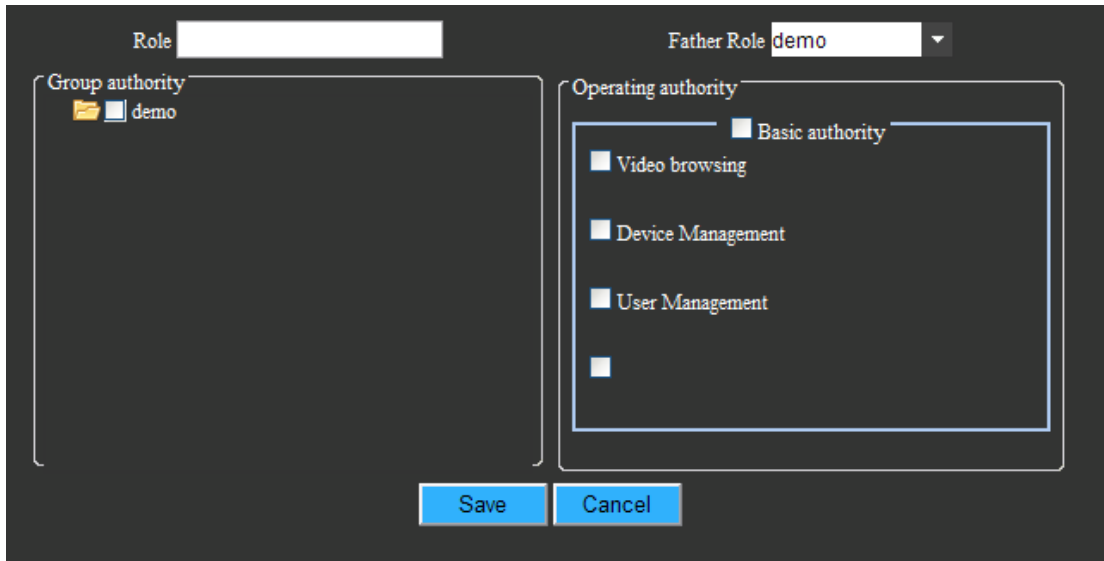
##### Role

Permission distribution: users under one specific role can only use the permissions of this specific role. The roles here are inherited, for example: A-> B, B-> C, thus, C can use B's permission, but cannot use all the permissions of A.

##### Add

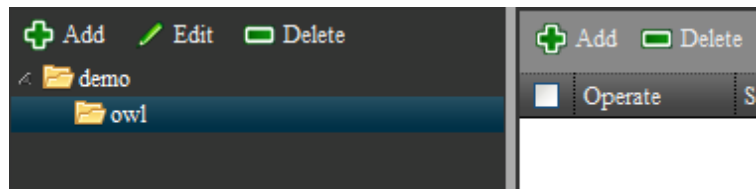
- Add role, then click add. Confirm the name of the role, choose the main role, and select the permissions for this role.
  - i. Group permission means the role manages which groups the devices submit to the group
  - ii. Operation permission means the permission of operation functions
- Save to complete this role adding





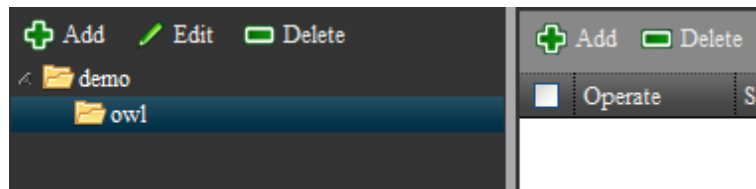
*Modify*

- Modify any roles, but the main role cannot be modified. Permissions and role names, etc., can be modified.



*Delete*

- Delete any roles (main roles cannot be deleted; if the main role is deleted, then the sub-roles and the users under the sub-role will be deleted too).



## 6) User

User: After the user logs into the system, authorities will be the authorities under that role.

**Add**

Click Add and enter into the add page

<input type="checkbox"/> Operate	Serial number	Device name	Device user	LAN	WAN	Web port	Media port
<input type="checkbox"/> <a href="#">Edit</a> <a href="#">Delete</a>	NF4017CA0018F5117418	4CH 720P NVR (China)	admin	192.168.1.249	119.122.12.131	85	9000
<input type="checkbox"/> <a href="#">Edit</a> <a href="#">Delete</a>	D78029SA.0018F511E00C	8CH SDI DVR (China)	admin	192.168.1.202	119.122.12.131	81	9001
<input type="checkbox"/> <a href="#">Edit</a> <a href="#">Delete</a>	D72388SA.0018F51121DA	32CH 960H DVR(China)	admin	192.168.1.250	119.122.12.131	86	9006
<input type="checkbox"/> <a href="#">Edit</a> <a href="#">Delete</a>	D78029S10018F51153E2	ISCE 8CH SDI DVR	admin				

Select the group, fill in the user and password (the user and password information used to log into the DVR).

Email is necessary and the only means of retrieving lost passwords. Save and finish the adding of users.

Fields marked with an \* are required, not optional.

**Delete**

There are two types of deletion: one is for the deletion of multiple users, and the other is for the deletion of a single user.

+ Add - Delete		Serial number	Device name	Device user	LAN	WAN	Web port	Media port
<input type="checkbox"/>	<a href="#">Edit</a> <a href="#">Delete</a>	NF4017CA0018F5117418	4CH 720P NVR (China)	admin	192.168.1.249	119.122.12.131	85	9000
<input type="checkbox"/>	<a href="#">Edit</a> <a href="#">Delete</a>	D780298A0018F511E00C	8CH SDI DVR (China)	admin	192.168.1.202	119.122.12.131	81	9001
<input type="checkbox"/>	<a href="#">Edit</a> <a href="#">Delete</a>	D723888A0018F51121DA	32CH 960H DVR(China)	admin	192.168.1.250	119.122.12.131	86	9006
<input type="checkbox"/>	<a href="#">Edit</a> <a href="#">Delete</a>	D78029810018F51153E2	ISCE 8CH SDI DVR	admin				

**7) Journal Search**

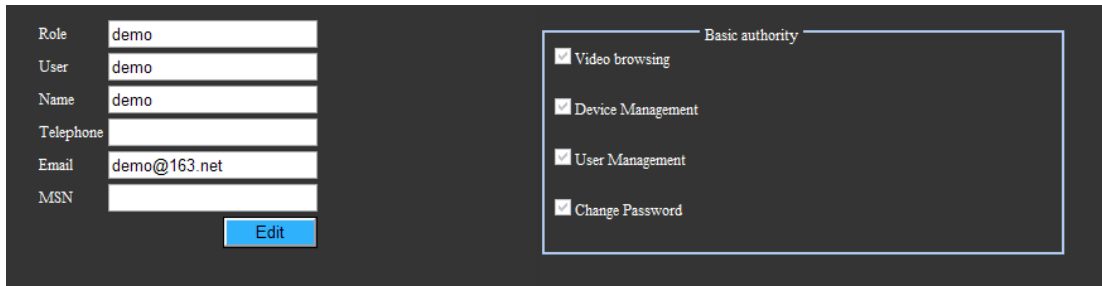
Search all the actions in the system that took place under a specific user.

User	Time	Log Type	Content
demo	2013-11-27 09:47:59	Add group	owl

Select the Role, User, Log Type, etc., then click Search. A log will be listed in the area below.

**8) Personal Information**

The Name, Telephone number, Email address, etc., can be modified. But Role, Account Information and Authority are not modifiable. Click Save and a box will pop up confirming a successful modification.



Role	demo
User	demo
Name	demo
Telephone	
Email	demo@163.net
MSN	

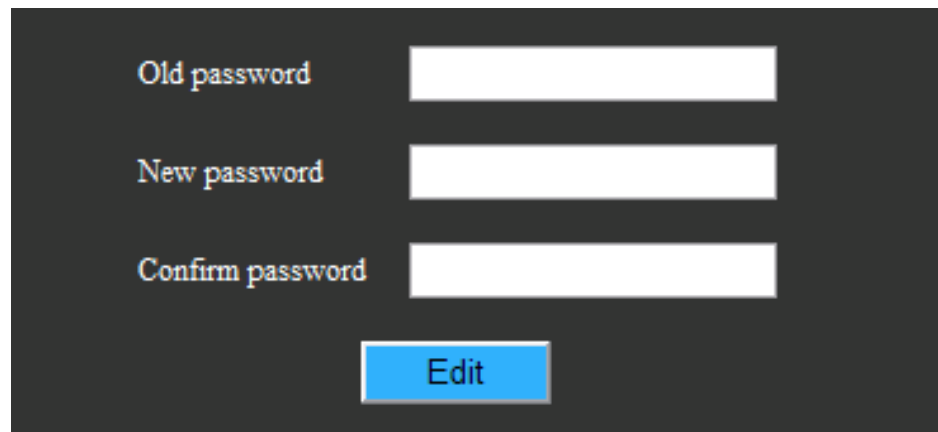
[Edit](#)

Basic authority

- Video browsing
- Device Management
- User Management
- Change Password

## 9) Modify Password

Input the old password (the current password) and the new password. Input your new password again and make sure they are the same. Click Save. If the old password is wrong, an error message will be displayed.



Old password

New password

Confirm password

[Edit](#)

## 10) System Help

The information of this app is displayed in this field.

Name	PCMS
Size	24.29MB
Version	1.0.0.092
Date	2013-11-20 13:59:46

[Download](#)

## 11) Log out of the system