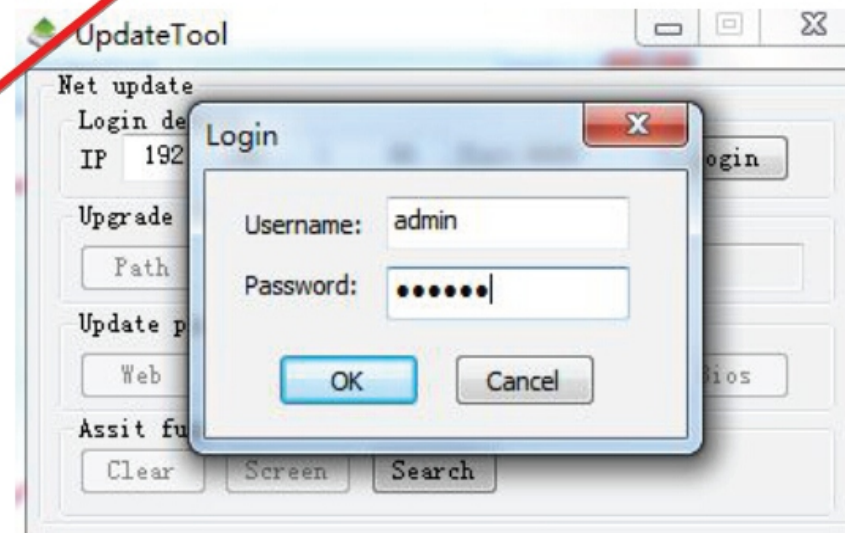
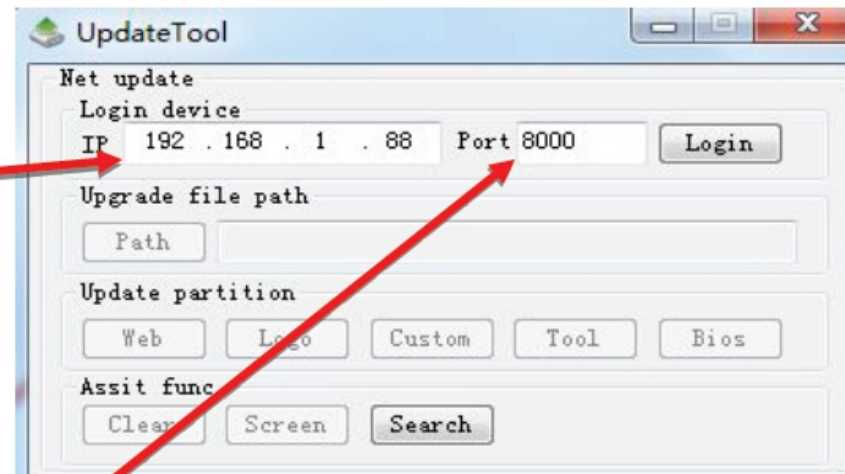
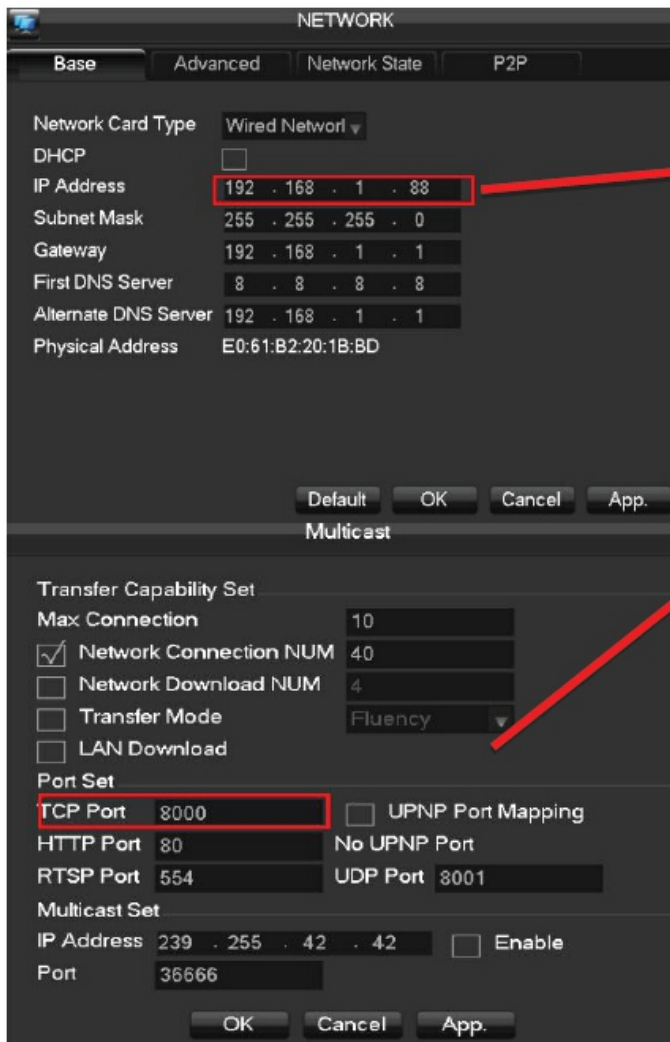


Upgrade tool

1. Input the IP and TCP Port (default IP is 192.168.1.88, default TCP PORT is 8000) .
2. Click the “login” button, input the username and password, default username is admin, password is 123456



How to modify parameters

Expansion: Change LOGO

- 1.Login in the device.
- 2.Click "Logo" button.
 - 1)Choose the logo you want,click"OK",then
 - 2)Notice:
 - 1.Boot logo:should be named"bmp_logo.bmp",and ".bmp" format,800*600 pixels,16 bit depth,the background color should be just one colour,black or white.
 - 2.Channel logo:should be named"bmp_logo_middle.bmp",and ".bmp" format,200*150 pixels,16 bit depth,the background color should be just one color,black or white.

