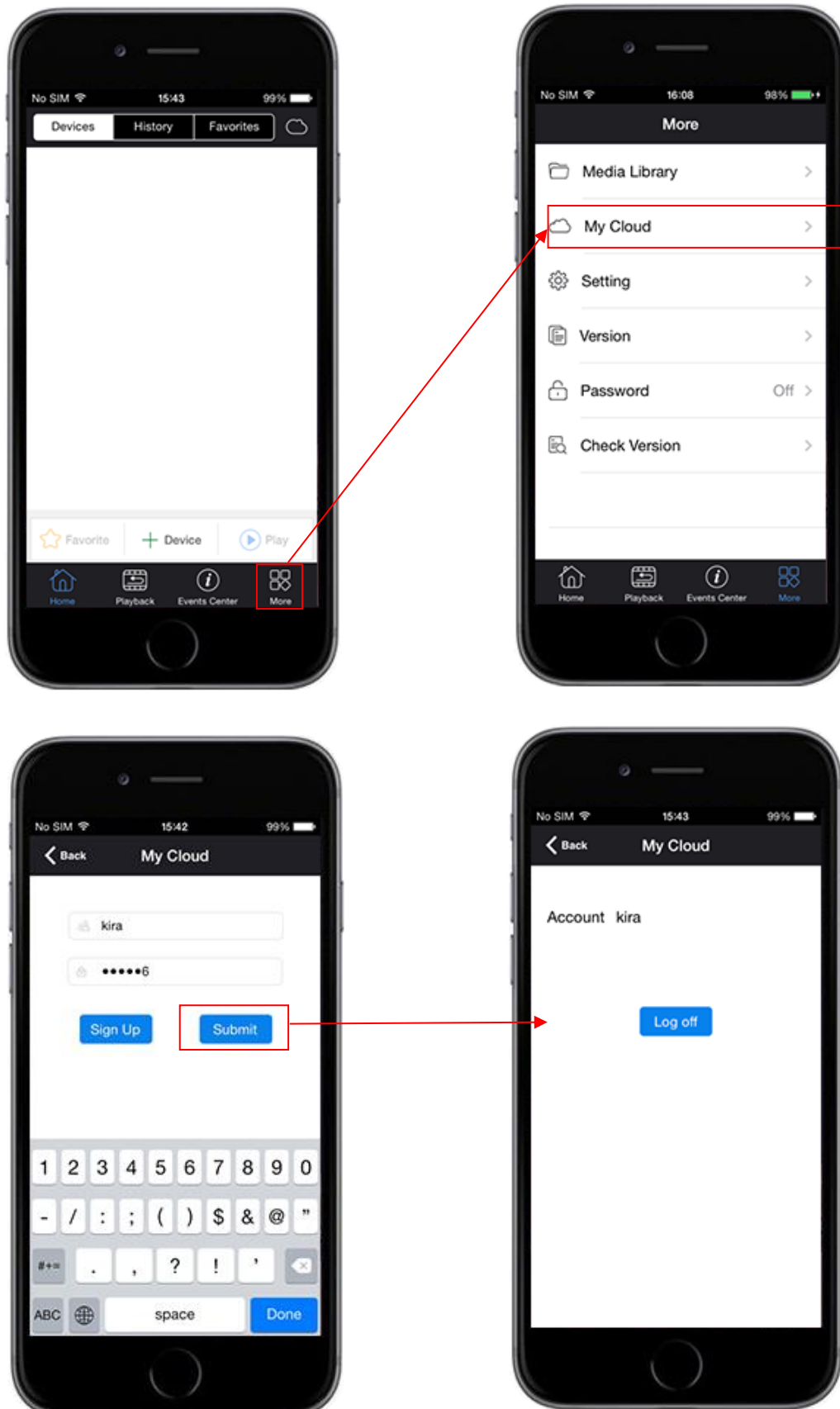
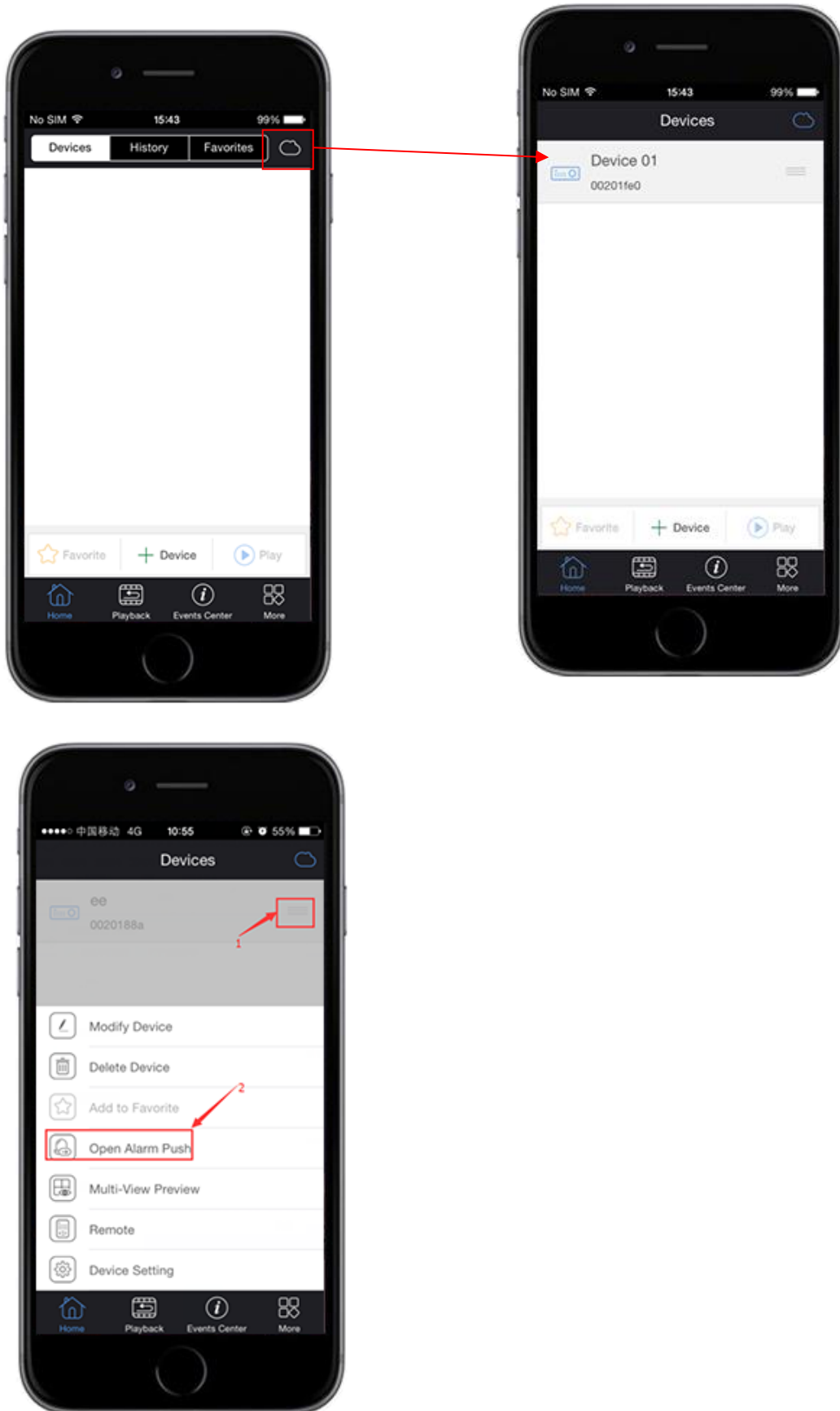


一、Operations on iProView APP

1. Click [More], then choose [My Cloud] to enter the P2P account and password.

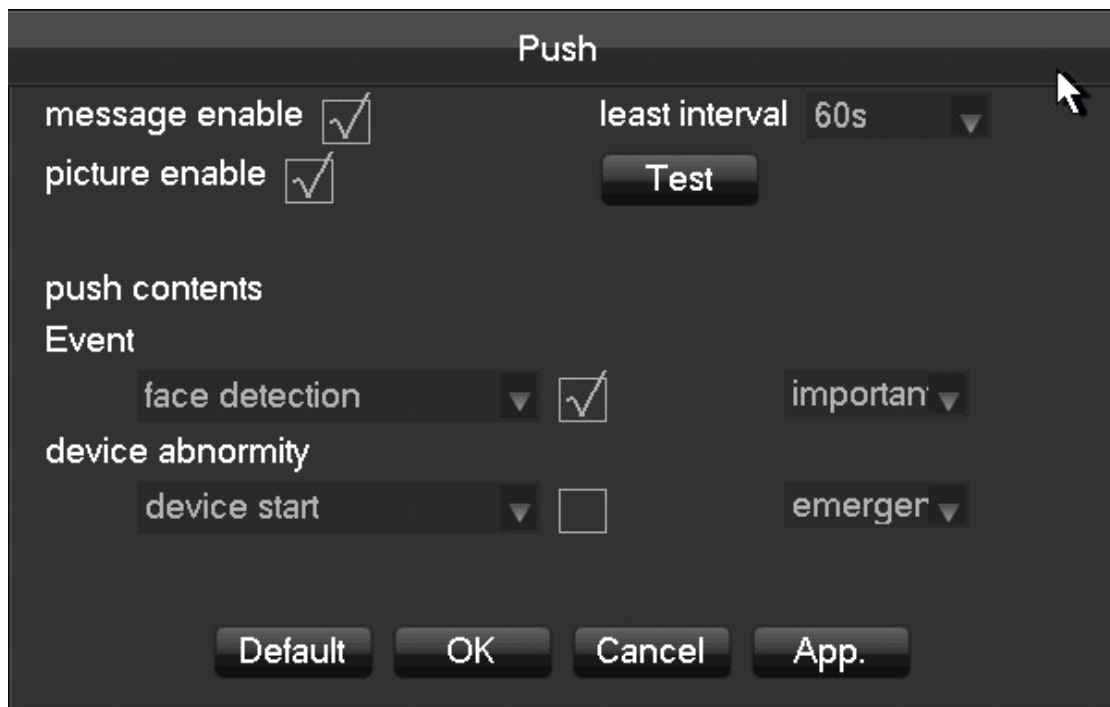


2. You will find the devices under your account.



二、 Operations on DVR/NVR

1. Click [APP CENTER]—[Push] to set the push alarm.



The screenshot shows a 'Push' configuration window with the following settings:

- message enable
- picture enable
- least interval 60s (dropdown menu)
- Test button
- push contents
- Event
 - face detection important (dropdown menu)
 - device abnormality
 - device start emergency (dropdown menu)
- Default, OK, Cancel, and App. buttons at the bottom.

Least interval: 60s/90s/120s, the least upload interval between the first picture and the next picture. If there are many triggered in 60sec, just upload the first picture in this time.

Event: enable the event type, and choose the important level (general/important/emergency)

If the important level is emergency, the least interval will be invalid, the snap short will be uploaded once triggered.