

Full HD
1080P

5.0M

ONVIF 2.4



H.265
Compression

4-18mm lens



Starlight camera

5.0MP Full HD Network Starlight Camera

Model: BJ5000A-IPC-POE

> 1/1.8" Full HD SONY Ultra Low-light CMOS Sensor

> 15fps@5.0MP;30fps@3.0MP;30fps@1080P

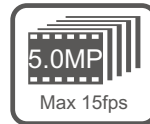
> Ultra Starlight Color

> DWDR, Super Low Lux, 3D-DNR, Antifogging, Image Stabilizer

> 4-18mm Mega Pixel lens (12-40mm lens optional)

> DC12V, Support POE (802.3af, 802.3at)

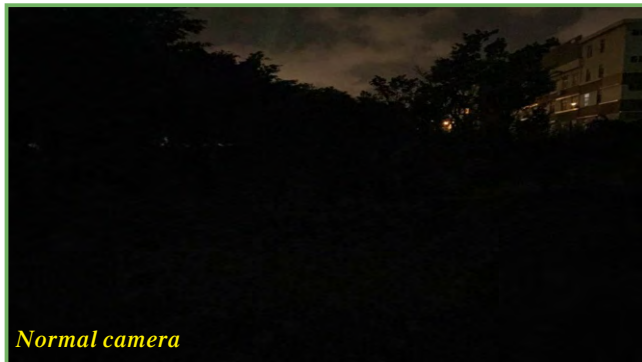
> Weather proof IP67



Comparison pictures



Starlight camera



Normal camera

Technical Specifications

Model	BJ5000A-IPC-POE	
Image Sensor	1/1.8" Full HD SONY Ultra Low-light CMOS Sensor	
Min. Illumination	0.001Lux@F1.2 (Color)	
S/N Ratio	50db(AGC OFF)	
WDR Range	DWDR, >80db	
Video		
Compression	H.265 (Main Profile), H.264 (Baseline/Main Profile/High Profile), MJPEG	
Frame Rate	Main Stream	2592x1944@15fps, 2048x1536@25/30fps, 1920x1080@25/30fps
	Sub Stream	720x576(1~25/30fps), 640x480(1~25/30fps), 640x352(1~25/30fps), 320x240(1~25/30fps)
Bif Rate	32KB ~ 16Mbps, support VBR, CBR	
Subtitles overlay	Support channel name, date, and video stream information overlay, position adjustable	
Network		
Recording mode	Manual, Auto (always, timing, alarm, motion)	
Protocol	TCP/IP, UDP, RTP, RTSP, RTCP,HTTP, DNS, DDNS, DHCP, FTP, NTP, PPPOE, SMTP, UPNP	
ONVIF	ONVIF Ver. 2.4	
IE	Support IE6.0 above (built-in web server). Support Max. 10 users in the same time	
Lens		
Lens	4-18mm Mega Pixel lens (12-40mm lens optional)	
General		
Power Supply	DC 12V / POE (802.3af) / POE (802.3at)	
Working Environment	Temp. -10°C to 50°C RH 85% Max	
Weather Proof	IP67	
Dimensions	340mm(L) *140mm(W) *100mm(H)	



Compatible ONVIF 2.4

Super DWDR function



Provide SDK for secondary development to fit in with other system



More NVR Partners



More Platform Software Partners



More P2P Cloud Server

