

### BASIC INFORMATION – COMMON RTSP ADDRESS FORMATS

---

Akuvox Door Stations – [IP ADDRESS]

DoorBird Door Stations – rtsp:// [IP ADDRESS] /mpeg/media.amp

### COMMON RTSP ADDRESS FORMATS FOR RECORDERS AND IP CAMERAS

---

Below are the most URL formats for the most common security system brands. If there is no separate address format for the IP camera, use channel 1 for [CH]. All examples use the following parameters:

[ADDRESS] – This can be the IP address or the domain / DDNS name of your device

In our examples, the [ADDRESS] = 192.168.1.88

[RTSP PORT] – This is the RTSP port of your device, the default is normally 554 or 9090

In our examples, the [RTSP PORT] = 9090

[CH] – This refers to the channel number that you want to pull. If it is an IP Camera, use [CH] = 1

In our examples, [CH] = 14

Hikvision Recorders and IP Cameras – rtsp:// [ADDRESS] : [RTSP PORT] /Streaming/Channels/ [CH] 02

Example – rtsp://192.168.1.88:9090/Streaming/Channels/1402

Dahua Recorders and IP Cameras – rtsp:// [ADDRESS] : [RTSP PORT] /cam/realmonitor?channel= [CH] &subtype=1

Example – rtsp://192.168.1.88:9090/cam/realmonitor?channel=14&subtype=1

Uniview NVR – rtsp:// [ADDRESS] : [RTSP PORT] /unicast/c [CH] /s1/live

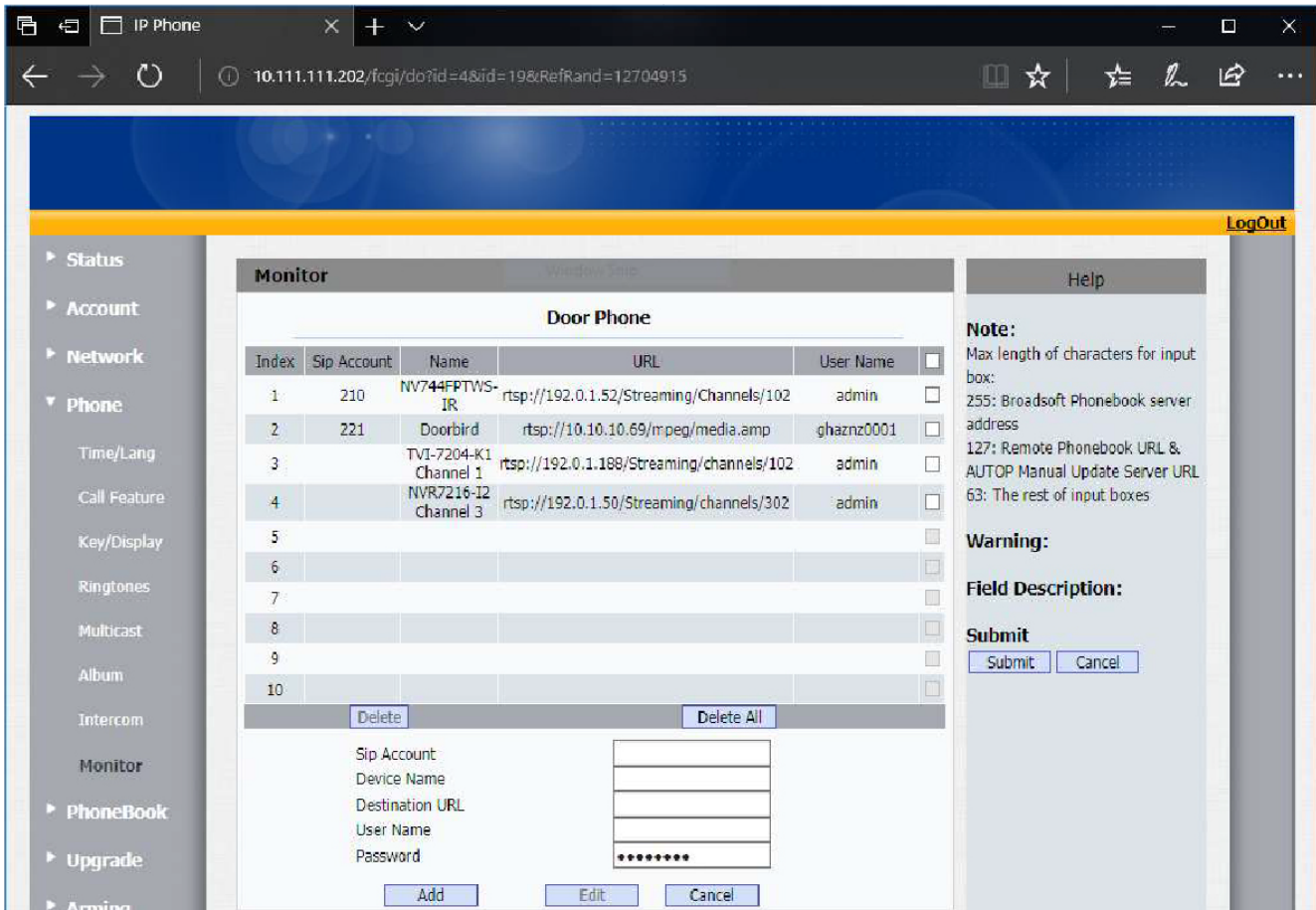
Example – rtsp://192.168.1.88:9090/unicast/c14/s1/live

Uniview IP Cameras – rtsp:// [ADDRESS] : [RTSP PORT] /media/video2

Example – rtsp://192.168.1.88:9090/media/video2

### STEPS TO SET IT UP ON YOUR INTERCOM MONITOR (WEB BROWSER)

To set it up on a web browser, log into the device on a web browser. Then go to Phone -> Monitor.



Fill in the fields for "Door Phone" and then select "Add" when finished:

- Sip Account:** This field is optional, it can be the SIP extension or IP address of your device, or a different device. This field can customize the preview video while ringing.
- Device Name:** A name for your device
- Destination URL:** This is the RTSP address of the device you want to monitor  
Common formats can be found on the first page
- User Name:** The username of the device you want to monitor
- Password:** The password of the device you want to monitor